

# Installation

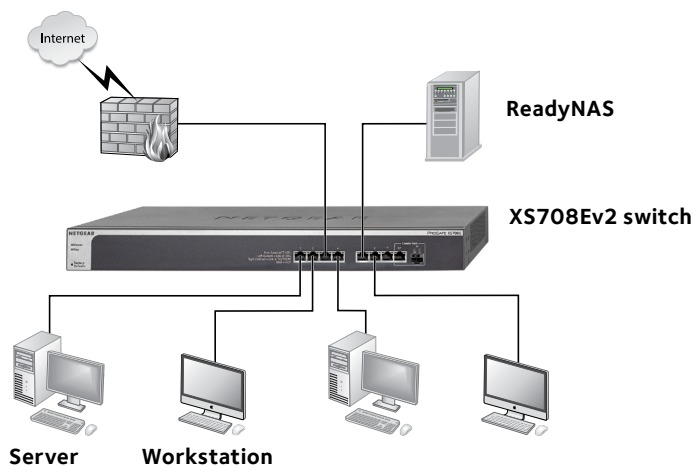
## ProSAFE 10-Gigabit Ethernet Web Managed Switch XS708Ev2 and XS716E

XS708Ev2 and XS716E

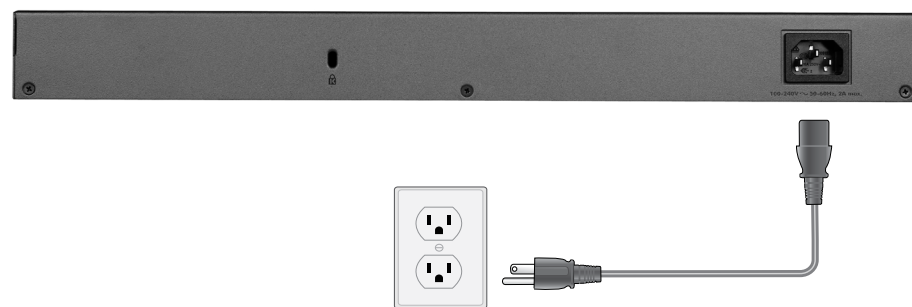


**NETGEAR**

### Step 1. Connect the equipment.



### Step 2. Connect power.



### Step 3. Check the status.



#### Power LED

- On
- Off

#### Left port LEDs

- 10 Gbps link
- Activity (blinking)
- No link (off)

#### Right port LEDs

- 1 Gbps/100 Mbps link
- Activity (blinking)
- No link (off)

#### Fan LED

- Fan failure (on)
- Fan normal (off)

## Configuring the Switch

ProSAFE® Web Managed switches are Plug-and-Play, so they can be used without any configuration. You can also configure and manage additional advanced features of the switch either by using your computer's web browser or by installing the ProSAFE Plus Configuration Utility on your Windows-based computer.

### Web Browser Access

You can configure a switch when it is connected only to your computer (off-network), or connected to your computer and your network (on-network).

#### ➤ To use your web browser to configure your switch:

1. If you are configuring the switch off-network, record your computer's TCP/IP configuration settings, and then configure the computer with a static IP address of 192.168.0.210 and with 255.255.255.0 as the subnet mask.

**Note:** If you are unsure how to do this, visit [www.netgear.com/support](http://www.netgear.com/support) and search for **Static IP address on computer**.

2. Plug the switch into a power outlet and connect your computer to the switch using an Ethernet cable.
3. If you are configuring the switch on-network, connect the switch to your network with another Ethernet cable.
4. Open a web browser and enter the IP address of the switch.

If the switch is off-network or connected to a network with no DHCP server, use its default IP address, **http://192.168.0.239**. If the switch is connected to a network with a DHCP server, use the IP address that the DHCP server assigned to the switch. If you are unsure how to determine the IP address of the switch, you can use the ProSAFE Plus Configuration Utility.

5. Enter the password.

The default password is **password**.

6. Click the **Login** button.  
You can now configure additional options for the switch in the web browser interface.
7. When you finish configuring an off-network switch, return your computer to its original TCP/IP settings and connect the switch to your network using an Ethernet cable.

### ProSAFE Plus Configuration Utility Access

The ProSAFE Plus Configuration Utility runs on Windows-based computers. The utility is on the resource CD that came with the switch. You can also visit [www.netgear.com/support/product/PCU](http://www.netgear.com/support/product/PCU) to download the utility.

#### ➤ To install the utility from the resource CD:

1. Insert the resource CD into a computer that is connected to the switch.
2. Click the **Install ProSAFE Plus Utility** link and follow the prompts to install the program.

The utility is installed in the program directory of your computer and a **ProSAFE Plus Utility** icon is placed on your desktop.

#### ➤ To configure the switch:

1. Double-click the **ProSAFE Plus Utility** icon.  
The configuration home page displays a list of Web Managed switches that it discovers on the local network.
2. Select the switch that you want to configure from the list.
3. When prompted, enter the password.  
The default password is **password**.
4. Use the utility to configure the switch settings.

For a description of Web Managed features, see the *ProSAFE Plus Switch Utility User Guide*. You can access the user guide through links on the **Help** tab of the utility and from the resource CD.

## Specifications

Network Environment	Description	
Network interface	RJ-45 connector for 100M/1G/10G copper connections; SFP+ port for 1G/10G fiber connections.	
Network cable	Use Category 5e (Cat 5e) or better terminated with an RJ-45 connector to make 10-Gigabit connections. Cat 6a or Cat 7 cables are recommended for 10-Gigabit cable connections greater than 45 m (148 ft).	
Operating temperature	0°–50°C (32°–122°F)	
Operating humidity	10%–90% relative humidity, noncondensing	
Specification	XS708Ev2	XS716E
Ports	8	16
Power (maximum)	100–240 VAC 50–60 Hz, 2A	100–240 VAC 50–60 Hz, 2.5A
Power consumption	43.39W maximum	62.69W maximum
Weight	2.8 kg (6.17 lb)	3.2 kg (7.05 lb)
Dimensions (W x D x H)	440 mm x 204 mm x 43 mm (17.32 in. x 8.03 in. x 1.69 in.)	440 mm x 204 mm x 43 mm (17.32 in. x 8.03 in. x 1.69 in.)

## Support

Thank you for purchasing this NETGEAR product. You can visit [www.netgear.com/support](http://www.netgear.com/support) to register your product, get help, access the latest downloads and user manuals, and join our community. We recommend that you use only official NETGEAR support resources.

For the current EU Declaration of Conformity, visit

[http://support.netgear.com/app/answers/detail/a\\_id/11621/](http://support.netgear.com/app/answers/detail/a_id/11621/).

For regulatory compliance information, visit [netgear.com/about/regulatory/](http://netgear.com/about/regulatory/).

See the regulatory compliance document before connecting the power supply.



201-19542-03



NETGEAR INTL LTD  
Building 3, University Technology Centre  
Curraheen Road, Cork, Ireland

NETGEAR, Inc.  
350 East Plumeria Drive  
San Jose, CA 95134, USA

© NETGEAR, Inc., NETGEAR and the NETGEAR Logo are trademarks of NETGEAR, Inc. Any non-NETGEAR trademarks are used for reference purposes only.

August 2016