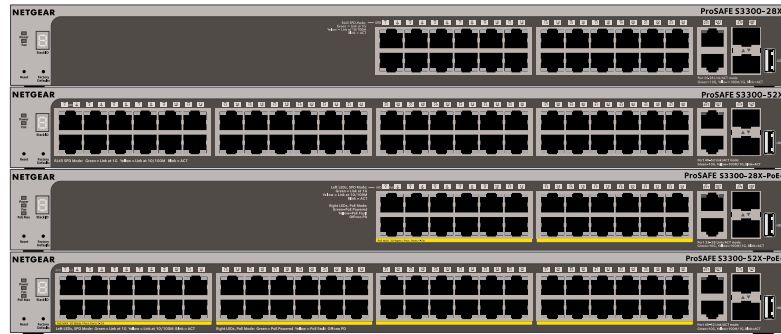


Installation

NETGEAR ProSAFE Smart Switch S3300

S3300-28X, S3300-52X, S3300-28X-PoE+,
S3300-52X-PoE+



Package Contents

- NETGEAR ProSAFE Smart Switch S3300-28X, S3300-52X, S3300-28X-PoE+, or S3300-52X-PoE+
- Rubber footpads for tabletop installation
- AC power cord
- 19-inch rack-mount kit for rack installation
- Resource CD

NETGEAR

Connect the Switch to Your Network

If you are using static IP addresses in your network you must configure the switch with a static IP. If you are using DHCP server, you can skip the next section.

➤ To configure the switch with a static IP address:

1. Configure your computer with a static IP address in the 192.168.0.x subnet.
2. Connect your computer to a port on the switch using an Ethernet cable.
3. In a browser, enter the default IP address of your switch, 192.168.0.239.

A login screen displays.

4. Enter **password** for the password.
5. Select **System > Management > IP Configuration**.
6. Enter the static IP address you want to assign the switch.
7. Click the **Apply** button.

➤ To connect your switch to your network:

1. Cable a computer to an Ethernet port on the switch front panel.
2. Power on the switch.
3. Verify that the computer with the Smart Control Center Utility is on the same subnet as the switch.

Configure the Switch

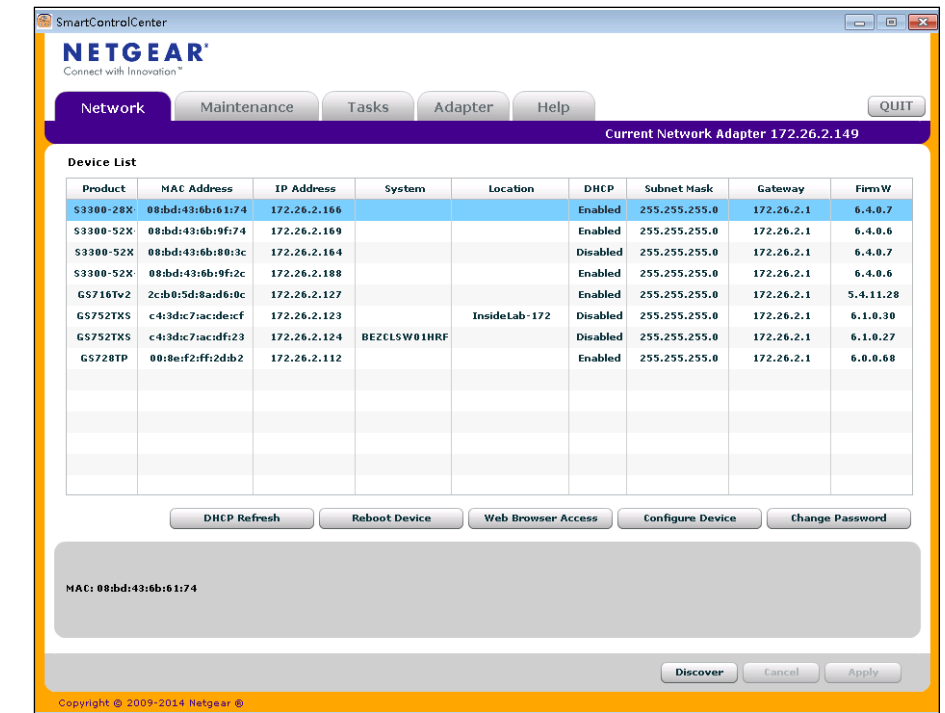
Use the Smart Control Center Utility included on the Resource CD ++to configure the switch.

➤ To configure your switch:

1. Double-click the Smart Control Center Utility icon on your desktop. The Smart Control Center displays.

2. Click the **Discover** button.

The Smart Control Center Utility finds the switch and displays its MAC address, IP address, and model number.

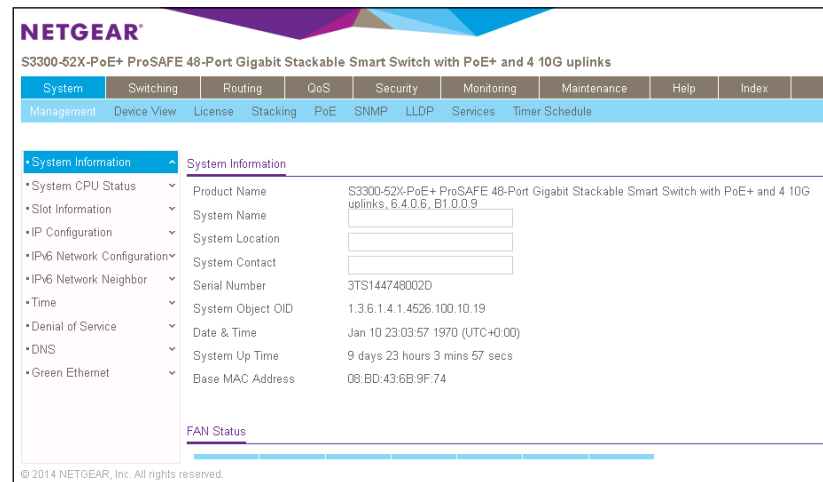


3. Click the line for the switch that you want to configure.

- Click the **Web Browser Access** button.
The login screen displays.



- Enter **password** for the password.
- Click the **Login** button.
The System Information screen displays.



System Information	
• System CPU Status	Product Name S3300-52X-PoE+ ProSAFE 48-Port Gigabit Stackable Smart Switch with PoE+ and 4 10G uplinks, 6.4.0.6_B1.0.0.9
• Slot Information	System Name
• IP Configuration	System Location
• IP6 Network Configuration	System Contact
• IP6 Network Neighbor	Serial Number 3TS144748002D
• Time	System Object OID 1.3.6.1.4.1.4526.100.10.19
• Denial of Service	Date & Time Jan 10 23:03:57 1970 (UTC+0.00)
• DNS	System Up Time 9 days 23 hours 3 mins 57 secs
• Green Ethernet	Base MAC Address 08:BD:43:6B:9F:74

- Configure the switch for your network.
For more information, see the software administration guide.

Troubleshooting Tips

Follow these troubleshooting tips to correct simple problems you might have.

- Power on the switch before connecting the computer.
- Make sure the Ethernet cables are plugged in. For each powered-on computer connected to the switch, the corresponding switch LAN port status LED is lit.
- Make sure the network settings on the computer are correct. In most cases, computers should be configured to obtain an IP address through DHCP. If your network uses static IP addresses, be sure that the switch and computer are configured with valid IP addresses. For more information, see the software administration manual.

Support

Thank you for selecting NETGEAR products.

After installing your device, locate the serial number on the label of your product and use it to register your product at <https://my.netgear.com>.

You must register your product before you can use NETGEAR telephone support. NETGEAR recommends registering your product through the NETGEAR website. For product updates and web support, visit <http://support.netgear.com>.

NETGEAR recommends that you use only the official NETGEAR support resources.

For the current EU Declaration of Conformity, visit http://support.netgear.com/app/answers/detail/a_id/11621/.

For regulatory compliance information, visit <http://www.netgear.com/about/regulatory/>.

See the regulatory compliance document before connecting the power supply.



July 2014

NETGEAR, Inc.
350 East Plumeria Drive
San Jose, CA 95134, USA

NETGEAR, the NETGEAR logo, and Connect with Innovation are trademarks and/or registered trademarks of NETGEAR, Inc. and/or its subsidiaries in the United States and/or other countries. Information is subject to change without notice. © NETGEAR, Inc. All rights reserved.