

NETGEAR ProSafe® Smart Switch XS712T

Package Contents

- NETGEAR ProSafe® Smart Switch XS712T
- Rubber footpads for tabletop installation
- AC power cord
- 19-inch rack-mount kit for rack installation
- Installation guide
- Smart Switch resource CD that includes the Smart Control Center Utility and *XS712T Hardware Installation Guide*. (A link to the online *XS712T Software Administration Manual* is on the resource CD.)

WARNING: DO NOT stack equipment, or place equipment in tight spaces, in drawers, or on carpets. Make sure that your equipment has at least 2 inches (5 cm) of air space on all sides.

Configure the Switch

Install the Smart Control Center Utility and use it to configure the switch.

Install the Smart Control Center Utility on a Computer

1. Insert the resource CD into your CD drive.
2. Run the Setup program to install the Smart Control Center Utility. The Installation Wizard guides you through the installation.

Connect Your Smart Switch

If you have a DHCP server in you network, see [Connect the Switch to Your Network](#).

If you are using static IP addresses in you network, first see [Configure the Switch with a Static IP Address](#), and then see [Connect the Switch to Your Network](#).

Configure the Switch with a Static IP Address

If you are using a static IP address in you network, configure the switch IP address before connecting the switch to your network. The default IP address of the switch is 192.168.0.239.

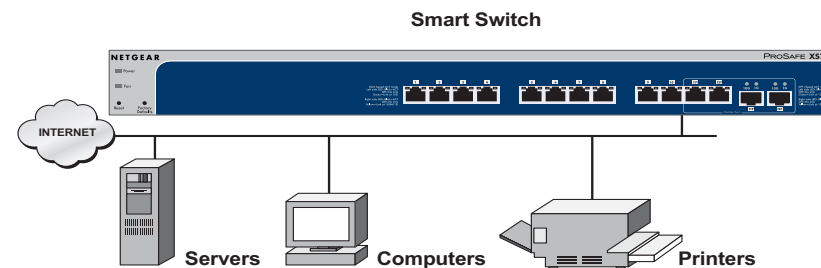
Note: If you are using a DHCP server in your network, this procedure does not apply to you; instead, go directly to [Connect the Switch to Your Network](#).

1. Set up the computer with a static IP address in the 192.168.0.x subnet.
2. Connect the computer to the switch.
3. Configure the IP address of the switch to match your network configuration.

Connect the Switch to Your Network


1. Connect each computer to an RJ-45 network port on the switch front panel. Use Category 5e (Cat 5e) or better Ethernet cable (Cat 6, Cat 6a, or Cat 7) terminated with an RJ-45 connector to make 10 G connections.

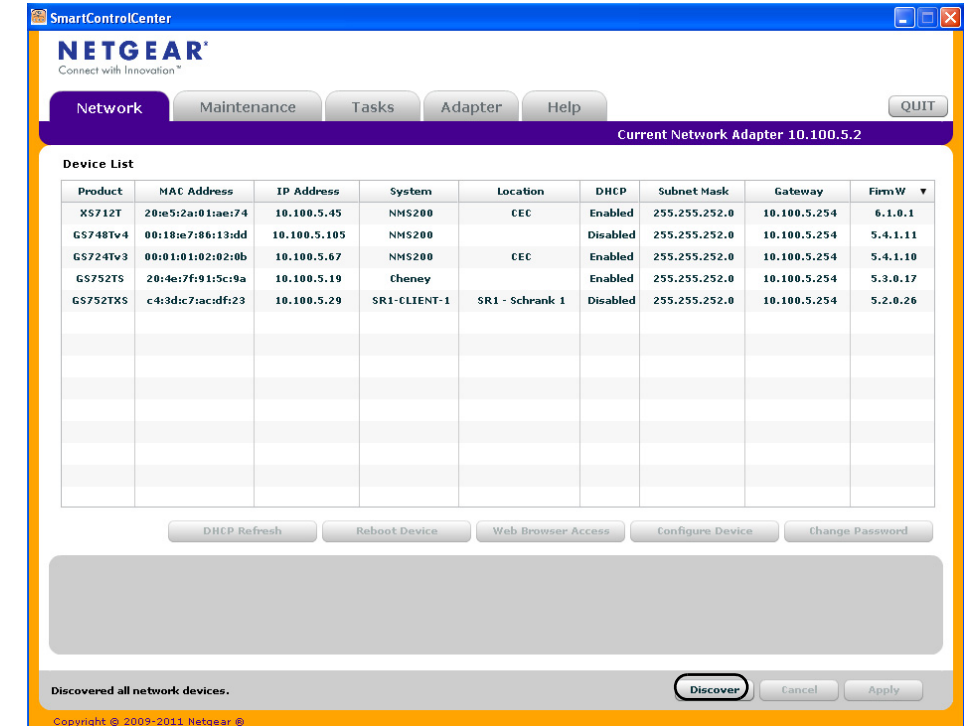
Note: Cat 6a or Cat 7 cables are recommended if cable distance is greater than 45 m (148 ft).



2. Connect the switch to your network.
3. Power on the switch.
4. Verify that the computer with the Smart Control Center Utility is on the same subnet as the switch.

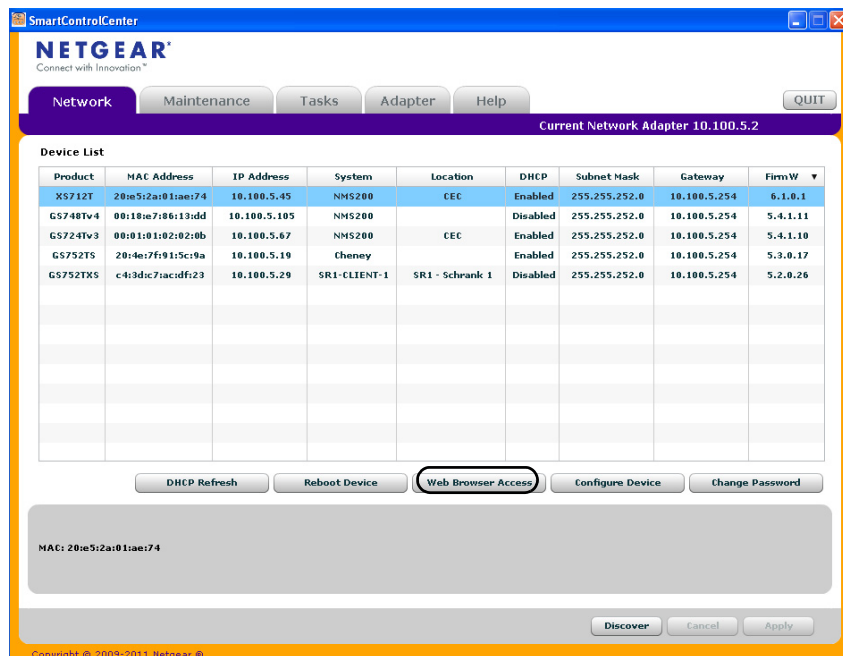
Configure the Switch with the Smart Control Center Utility

1. Double-click the Smart Control Center Utility icon  on your desktop or in the Windows Start menu to run the utility and view this screen.



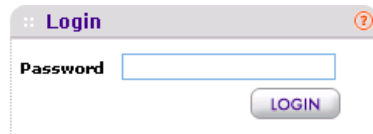
2. Click the **Discover** button.

The Smart Control Center Utility finds the switch and displays its MAC address, IP address, and model number.



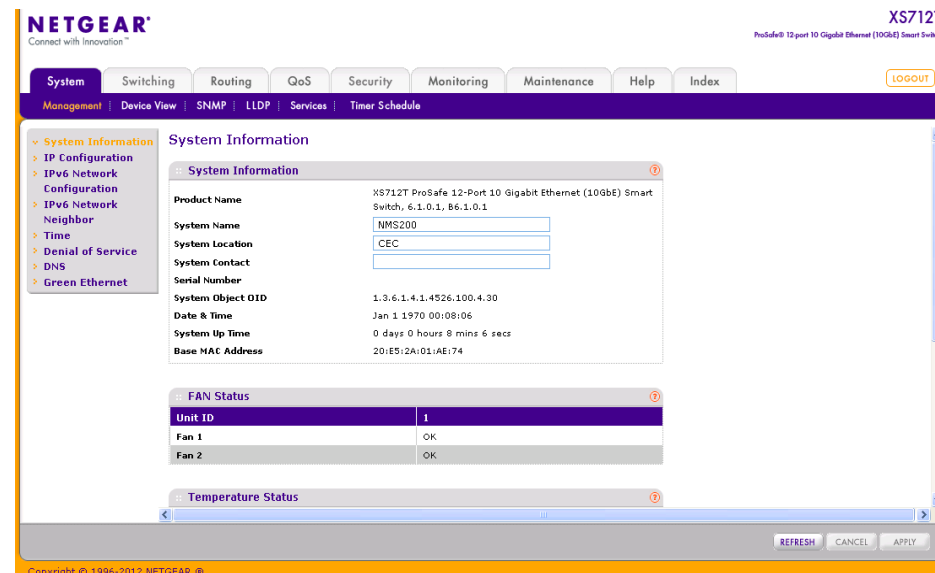
If the utility does not discover your switch, verify that the cable connections are secure and that the IP address configuration of the computer is in the same subnet as the switch, and click the **Discover** button.

- Click the line for the switch you want to configure.
- Click the **Web Browser Access** button to view the switch Login screen.



- Enter the default password of **password** in lower-case letters and click the **Login** button.

The System Information screen displays.



- Configure the switch for your network.

For more information, see the *XS712T Software Administration Manual*.

Troubleshooting Tips

Here are some tips for correcting simple problems you might have.

- Be sure to power on your computer and switch in the following sequence:
 - Turn on the switch and wait 2 minutes.
 - Turn on the computer and connect to the switch.

- Make sure the Ethernet cables are plugged in.

For each powered-on computer connected to the switch, the corresponding switch LAN port status LED is lit.

- Make sure the network settings of the computer are correct.

In most cases, computers should be configured to obtain an IP address through DHCP.

If your network uses static IP addresses, be sure that the switch and computer are configured with valid IP addresses. For more information, see the software administration manual.

Support

Thank you for selecting NETGEAR products.

After installing your device, locate the serial number on the label of your product and use it to register your product at <https://my.netgear.com>.

You must register your product before you can use NETGEAR telephone support. NETGEAR recommends registering your product through the NETGEAR website. For product updates and web support, visit <http://support.netgear.com>.

NETGEAR recommends that you use only the official NETGEAR support resources.

For additional information about setting up, configuring, and using your smart switch, see the software administration manual. You can get the manual online at <http://downloadcenter.netgear.com>.

For the current EU Declaration of Conformity, visit http://support.netgear.com/app/answers/detail/a_id/11621/.

NETGEAR, the NETGEAR logo, and Connect with Innovation are trademarks and/or registered trademarks of NETGEAR, Inc. and/or its subsidiaries in the United States and/or other countries. Information is subject to change without notice. © NETGEAR, Inc. All rights reserved.

Intended for indoor use only in all EU member states, EFTA states, and Switzerland.

January 2013



201-17007-01

NETGEAR, Inc.
350 East Plumeria Drive
San Jose, CA 95134 USA