

RDX QuikStation™

**QUICK
START**

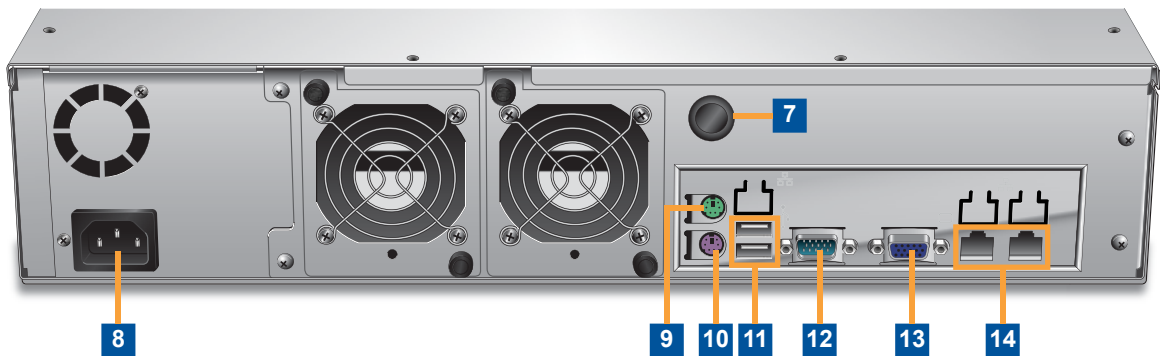
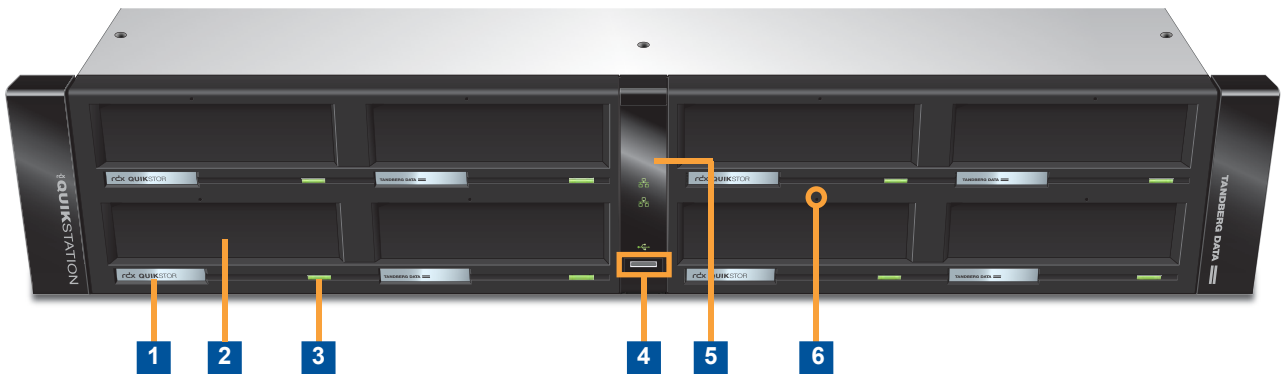


WHAT'S IN THE BOX?



1. RDX QuikStation
2. North American Region Power Cord
3. European Region Power Cord
4. Ethernet Cables (2 each)
5. End Cap Covers
6. USB Flash Drive
7. Rail Extension Brackets (2 each)
8. Washers for Rackmount Kit (8 each)
9. Hardware Pack for Inner Rails
10. Hardware Pack for Outer Rails
11. Rackmount Outer Rails (2 each)
12. Rackmount Inner Rails (2 each)
13. Quick Start Guide
14. Rackmount Instructions

RDX QuikStation System Components



- | | |
|---|--|
| 1 | RDX LCD panel (8 each) |
| 2 | RDX dock (8 each) |
| 3 | RDX cartridge eject button (8 each) |
| 4 | USB 2.0 port – used for configuration and diagnostic purposes |
| 5 | LED panel – displays indicators for network, USB connection, and system health |
| 6 | Emergency-eject keyhole (8 each) |
| 7 | Power button |

- | | |
|----|---------------------------------|
| 8 | Power connector |
| 9 | Mouse connector (green) |
| 10 | Keyboard connector (purple) |
| 11 | USB 2.0 ports (2 each) |
| 12 | Serial connector |
| 13 | VGA connector |
| 14 | Gigabit Ethernet ports (2 each) |

Before you Begin

For all host computers that will be backed up by the RDX QuikStation, verify that the host computer OS has iSCSI initiator software installed.

Windows

iSCSI initiators are included with Windows Server 2008 and later. If necessary, download and install the appropriate iSCSI initiator from the Microsoft web site or from a third-party vendor.

Linux

iSCSI initiators are included with most Linux operating systems. If necessary, download and install the appropriate iSCSI initiator from the Linux OS manufacturer's web site or from a third-party vendor.

Macintosh

Macintosh systems require the installation of a third-party iSCSI initiator. We recommend that you download and install an iSCSI initiator that has been tested or recommended for use with your chosen backup application.

1 Unpack and Rackmount the Unit

- Verify all items are included in the accessory kit. (See *What's in the Box?* section.)
- Keep the packing materials and box in case you need to ship the unit later.
- Locate an appropriate area for the unit that has clearance for adequate ventilation, minimal dust, and an appropriate power source.
- Follow the rackmount instructions provided in the accessory kit to install the unit in a rack.

2 Connect Network and Power Cables

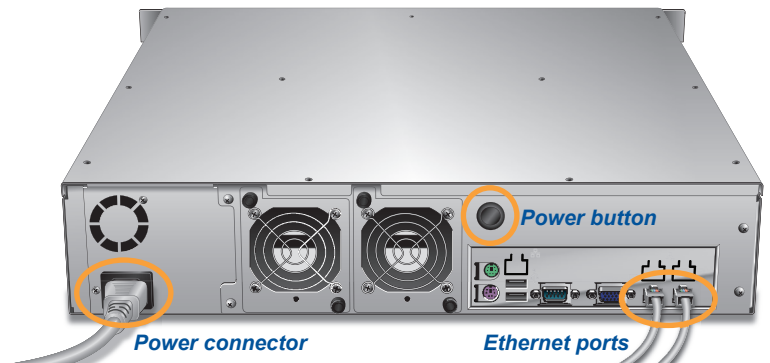
- Connect one or two RDX QuikStation ethernet network ports to ethernet network ports on a switch, hub, or router.

Note: Two network ports are recommended for failover protection.

- Connect the power cord that is appropriate for your region to the RDX QuikStation.
- Turn the power on by pressing the black power button that is located on the back of the RDX QuikStation.

Note: Once the unit is powered on, all eight LCD panels will alternately display the firmware level, system name, DHCP status, and IP address. This information continues to display until you log on to the Remote Management Console and configure the logical device type for the QuikStation.

- Verify that a valid IP address is displayed on the LCD panels. If not, you must manually configure the IP address for the RDX QuikStation. Go to Step 4 to configure a static IP address for the RDX QuikStation.



3 Connect to Remote Management Console

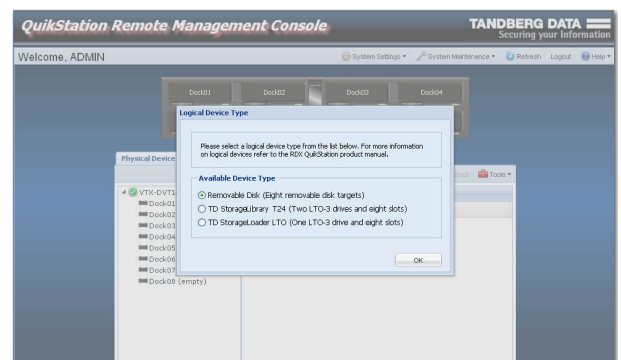
You can connect to the RDX QuikStation Remote Management Console from any computer on the same network as the RDX QuikStation. The computer can run on Windows, Linux, and Macintosh operating systems.

To connect to the RDX QuikStation Remote Management Console:

- Obtain the RDX QuikStation IP address from the unit's front LCD panels.
- From a network host, type the RDX QuikStation IP address: `<http://<RDX QuikStation IP address>` in a web browser.
- Log in to the Console. The default user name is **Admin**, and the default password is **Admin!**.

Note: The password is case sensitive.

The Remote Management Console opens. Go to Step 5 to configure your RDX QuikStation logical device type and other settings.



4

Configure the RDX QuikStation IP Address

Perform this step only if you are unable to obtain a valid IP address via DHCP from the RDX QuikStation's LCD panels.

To manually configure the IP address via USB flash drive:

- Insert the QuikStation USB flash drive into an open USB slot on any computer with a text editor. The USB flash drive is included in your QuikStation accessory box.
- Navigate to the USB Flash Drive. Open the **network.conf** file in a text editor. (For Windows users, open the file in Notepad.)

Note: You can also download the **network.conf** file from the Support section of the Tandberg Data web site.

- Follow the instructions given in **network.conf** file to edit the file to meet your network's requirements.
- Save the file as "**network.conf**." **Important:** The file name must remain as "**network.conf**." Otherwise, the RDX QuikStation will not recognize the file.
- Insert the USB flash drive into the USB port located on the center-front panel of the RDX QuikStation.
- When the USB symbol on the center-front LED panel stops blinking, remove the USB flash drive.
- Go to Step 3 to connect to the Remote Management Console, then proceed to Step 5.

```
#
# -- start edit section --
# IP=192.168.10.2
# SUBNETMASK=255.255.255.0
# GATEWAY=192.168.10.1
# -- end edit section --
#
# Step 2: Save this newly-edited file to the root
# stick included with the RDX QuikStation. If t
# any USB memory stick with a VFAT file system w
# of this file must remain network.conf for the
# process it.
#
```

Before editing the network.conf file

```
#
# -- start edit section --
# IP=10.1.20.85
# SUBNETMASK=255.255.255.0
# GATEWAY=10.1.20.254
# -- end edit section --
#
# Step 2: Save this newly-edited file to the roo
# stick included with the RDX QuikStation. If t
# any USB memory stick with a VFAT file system w
# of this file must remain network.conf for the
# process it.
#
```

After editing the network.conf file

5

Configure the RDX QuikStation

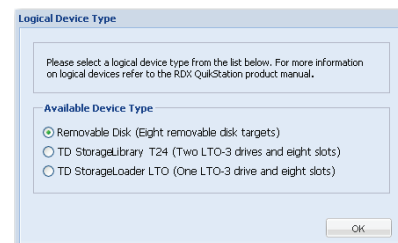
Logical Device Type

You can configure your RDX QuikStation as one of the following logical device types:

- Eight individual removable disks with eight removable iSCSI disk targets.
- A virtual Tandberg Data StorageLibrary T24 with two LTO-3 tape drives and eight slots.
- A virtual Tandberg Data StorageLoader with one LTO-3 tape drive and eight slots.

To configure the logical device type:

- Select the device type from the dialog window that opens when you first log on to the Remote Management Console. Click **OK**.



System Settings

Refer to the table below to configure the following RDX QuikStation system settings. For more information, see the *RDX QuikStation Product Manual*.

Setting	Purpose	Where to Find
Date and Time	Set the date and time to your time zone in order to receive accurate system and troubleshooting information.	From the main menu bar in the Remote Management Console, go to System Settings → Date/Time
Email Notifications	A valid email address is needed for logging, error reporting, and emergency password recovery.	From the main menu bar in the Remote Management Console, go to System Settings → Notification
Network Information	Tandberg Data recommends that you assign a static IP address to prevent inadvertent IP address changes of the iSCSI target. You can also configure optional DNS server addressing information.	From the main menu bar in the Remote Management Console, go to System Settings → Network The QuikStation will automatically reboot after you have made your network changes.
Firmware Updates	Tandberg Data strongly recommends that you check for firmware updates before you connect your iSCSI targets and set backup plans. For more information on updating firmware, see the <i>RDX QuikStation Product Manual</i> .	From the main menu bar in the Remote Management Console, go to System Maintenance → Update Firmware to download and install any available firmware updates.

6 Connect to iSCSI Targets

In iSCSI terminology, a host computer is referred to as an “initiator” and the storage device it connects to as the iSCSI “target.” The following instructions describe how to connect your network host computers via iSCSI to the RDX QuikStation in Windows Server 2008 R2.

For other operating system environments, refer to your OS user documentation or your iSCSI product documentation on how to establish an iSCSI initiator target.

Note: The host computers that you wish to connect to the RDX QuikStation must reside on the same network as the RDX QuikStation.

To establish an iSCSI connection:

- Open Microsoft iSCSI Initiator and click the Discovery tab.
- Click **Discover Portal...**. (Your version of iSCSI initiator may use **Add** depending on your Windows OS.)
- In the “Discover Target Portal” dialog window, enter the IP address for the RDX QuikStation. Click **OK**.
- Click the Targets tab.

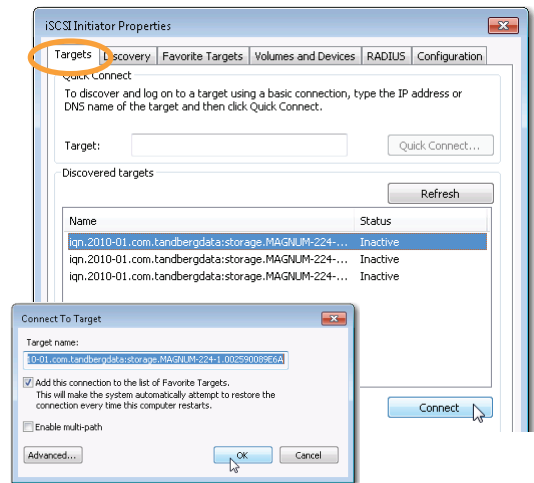
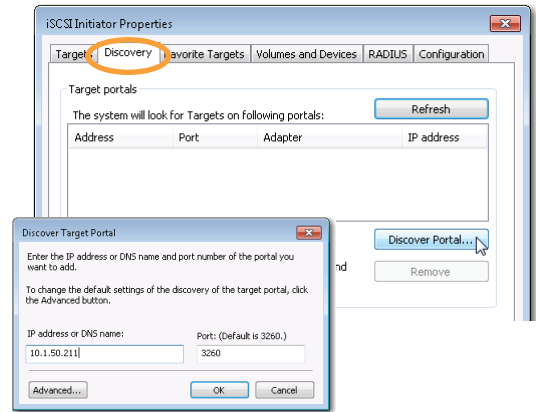
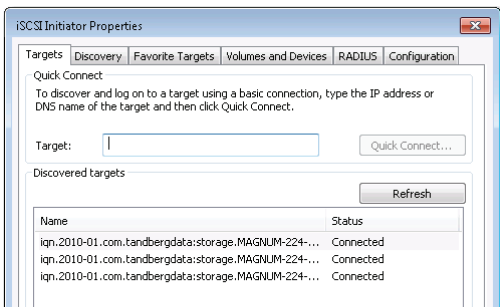
Depending on how you configured the logical device type for the QuikStation in Step 5, you will see two to eight iSCSI targets.

- Select an iSCSI target name (IQN). Click **Log On...**.

The “Log On to Target” dialog window opens.

- Select the “Add this connection to the list of Favorite Targets” checkbox. Click **OK**.
- Repeat this connection process for each iSCSI target that is displayed in the Discovered Targets section of the dialog window.

You have successfully connected the host computer to the RDX QuikStation’s iSCSI targets when the iSCSI targets display as “connected,” as shown below.



Screenshots reflect Windows Server 2008 R2. Your iSCSI initiator interface may differ slightly depending on your Windows OS.

Important: Tandberg Data recommends that you disconnect all iSCSI initiators before you shutdown or restart the RDX QuikStation for any reason.

Note: For information on setting iSCSI security, see the *RDX QuikStation Product Manual*, or refer to your iSCSI initiator product documentation.

7 Prepare for and Perform a Backup

- Insert RDX cartridges (sold separately) into the QuikStation’s RDX slots. Press the cartridges in until they lock in place.
- If you haven’t already done so, install a backup application. Software compatibility information is available online at <http://www.tandbergdata.com>.
- Launch and configure your backup application software to perform a backup. For questions regarding software installation, configuration, and operation, refer to your backup software product documentation or contact your software provider.

Note (applicable to tape library logical device types only): By default, the RDX QuikStation imports all inserted RDX cartridges, eliminating the need to perform import operations for each cartridge in your backup application. If needed, go to the Remote Management Console’s System Settings → Advanced Options to enable Import/Export (IE) slot functionality.

For more information about IE slot management, see the *RDX QuikStation Product Manual*.

TECHNICAL SUPPORT

Visit the Support section of the Tandberg Data web site (<http://www.tandbergdata.com>) for the following:

- Driver, firmware, and software updates
- Knowledge base articles
- Troubleshooting information
- Product documentation
- Product warranty and registration
- Email and phone technical support

Make a note of your Product Serial number here

Model No. RMN-A-05-10

Serial No.

Part No. 98900-RDX

Additional RDX Cartridges

To purchase RDX cartridges, contact your Tandberg Data Partner, or contact Sales via the Tandberg Data web site at <http://www.tandbergdata.com>.

Power Ratings

AC Input Voltage	100-240 VAC
Rated Input Current	2,0 - 1,0A
Rated Input Frequency	50/60 Hz

Safety Precautions



Be aware of the locations of the power on/off switch on the RDX QuikStation chassis as well as the room's emergency power-off switch, disconnection switch, or electrical outlet. If an electrical accident occurs, you can then quickly remove power from the system.

The RDX QuikStation is intended for use when mounted in a standard rack. It may be used on a shelf or table top, but proper care should be taken to keep the area around the unit free of clutter to ensure proper ventilation.

The interior of the unit is intended for factory use only. Other than replacing fans or RDX cartridges, users should not attempt to service the unit. In the event that one of the fans is removed for servicing, do not insert hands, fingers, or any foreign object into the space intended for the fan. Be extra cautious around spinning fan blades.

When working around exposed electrical circuits, another person who is familiar with the power-off controls should be nearby to switch off power if necessary.

The power supply cord must include a grounded plug and must be plugged into a grounded electrical outlet.



Electrostatic discharge is generated by two objects with different electrical charges coming into contact with each other. An electrical discharge is created to neutralize this difference, which can damage electrical components and printed circuit boards. The following measures are generally sufficient to neutralize this difference *before* contact is made to protect your equipment from ESD:

- Use a grounded wrist strap designed to prevent static discharge.
- Keep all components and printed circuit boards (PCBs) in their antistatic bags until ready for use.
- Touch a grounded metal object before removing any board from its antistatic bag.

Related Documentation

For additional information about the RDX QuikStation, refer to the following publications available from the Support section of the Tandberg Data web site (<http://www.tandbergdata.com>):

- *RDX QuikStation Product Manual, Part Number 1019786*
- *Field Instruction: Installing the RDX QuikStation in a Rack, Part Number 1019782*

©2010 Tandberg Data. All rights reserved. RDX QuikStation is a trademark of Tandberg Data. RDX is a registered trademark of ProStor Systems, Inc. All other trademarks are the property of their respective owners.

P/N 1019372 Rev. A

November 2010



Tandberg Data GmbH
Feldstrasse 81
44141 Dortmund, Germany

Agency Model Number: RMN-A-05-10

TANDBERG DATA 
Securing your Information

www.tandbergdata.com