



Intel® Modular Server Add-In for Microsoft Windows* Essential Business Server 2008 v1.1 Release Notes

Release Date: November 2009

Build # 12



Legal Statements

INFORMATION IN THIS DOCUMENT IS PROVIDED IN CONNECTION WITH INTEL® PRODUCTS FOR THE PURPOSE OF SUPPORTING INTEL DEVELOPED SERVER BOARDS AND SYSTEMS. NO LICENSE, EXPRESS OR IMPLIED, BY ESTOPPEL OR OTHERWISE, TO ANY INTELLECTUAL PROPERTY RIGHTS IS GRANTED BY THIS DOCUMENT. EXCEPT AS PROVIDED IN INTEL'S TERMS AND CONDITIONS OF SALE FOR SUCH PRODUCTS, INTEL ASSUMES NO LIABILITY WHATSOEVER, AND INTEL DISCLAIMS ANY EXPRESS OR IMPLIED WARRANTY, RELATING TO SALE AND/OR USE OF INTEL PRODUCTS INCLUDING LIABILITY OR WARRANTIES RELATING TO FITNESS FOR A PARTICULAR PURPOSE, MERCHANTABILITY, OR INFRINGEMENT OF ANY PATENT, COPYRIGHT OR OTHER INTELLECTUAL PROPERTY RIGHT.

UNLESS OTHERWISE AGREED IN WRITING BY INTEL, THE INTEL PRODUCTS ARE NOT DESIGNED NOR INTENDED FOR ANY APPLICATION IN WHICH THE FAILURE OF THE INTEL PRODUCT COULD CREATE A SITUATION WHERE PERSONAL INJURY OR DEATH MAY OCCUR.

Intel may make changes to specifications and product descriptions at any time, without notice. Designers must not rely on the absence or characteristics of any features or instructions marked "reserved" or "undefined." Intel reserves these for future definition and shall have no responsibility whatsoever for conflicts or incompatibilities arising from future changes to them. The information here is subject to change without notice. Do not finalize a design with this information.

The products described in this document may contain design defects or errors known as errata which may cause the product to deviate from published specifications. Current characterized errata are available on request.

Contact your local Intel sales office or your distributor to obtain the latest specifications and before placing your product order.

Intel is a trademark of Intel Corporation in the U.S. and other countries.

Microsoft, Windows, Windows Server, Active Directory, and Vista are trademarks, or registered trademarks of Microsoft® Corporation in the United States and/or other countries.

* Other names and brands may be claimed as the property of others.

Copyright © 2007–2009 Intel Corporation. All rights reserved.



1. Package Contents

Intel® Modular Server Add-In for Microsoft Windows* Essential Business Server 2008 v1.1	Build 12
---	----------

Note: This product contains free/open source software licensed under the free/open source licenses. These licenses grant you specific rights. Full copies of the applicable licenses can be found on the Resource DVD/*SMS Release Notes* or at support site

<http://support.intel.com/support/motherboards/server/sysmgmt/sb/CS-031025.htm>

2. Supported Operating Systems

- Microsoft Windows* EBS 2008 Standard Edition (Management Server, Security Server, and Messaging Server installations).

o

Managed Node

- Intel® Modular Server System MFSYS25
- Intel® Modular Server System MFSYS35
- Intel® Compute Module MFS5000SI
- Intel® Compute Module MFS5520VI

3. Supported Server Platforms

- Intel® Modular Server System MFSYS25
- Intel® Modular Server System MFSYS35

4. Supported Languages

- English



5. Features in this release

- Installation/ Un-installation
 - Stand-alone installer
- Discovery Configuration
 - Discovery task will launch on installation completion
 - Discovery task to discover Intel® Modular Server Management Module
 - User can provide either IP subnet range or Hostname
- Discovery of Intel® Modular Server Components and Management data
 - Discovery will run when Admin console is launched or when user presses F5 (manual refresh) and periodic
- Components in discovery
 - Chassis Management Module
 - Chassis Power and Cooling
 - Chassis Storage Modules and Ethernet Switches
 - Server Compute Modules
 - Storage
- Console Tasks
 - Discovery
 - Launch Point for CMM Web GUI
- Health & Monitoring
 - Health update is done periodically (time interval: 6 hours) or on demand, if user presses F5/Refresh.

6. Installation Instructions

Installation

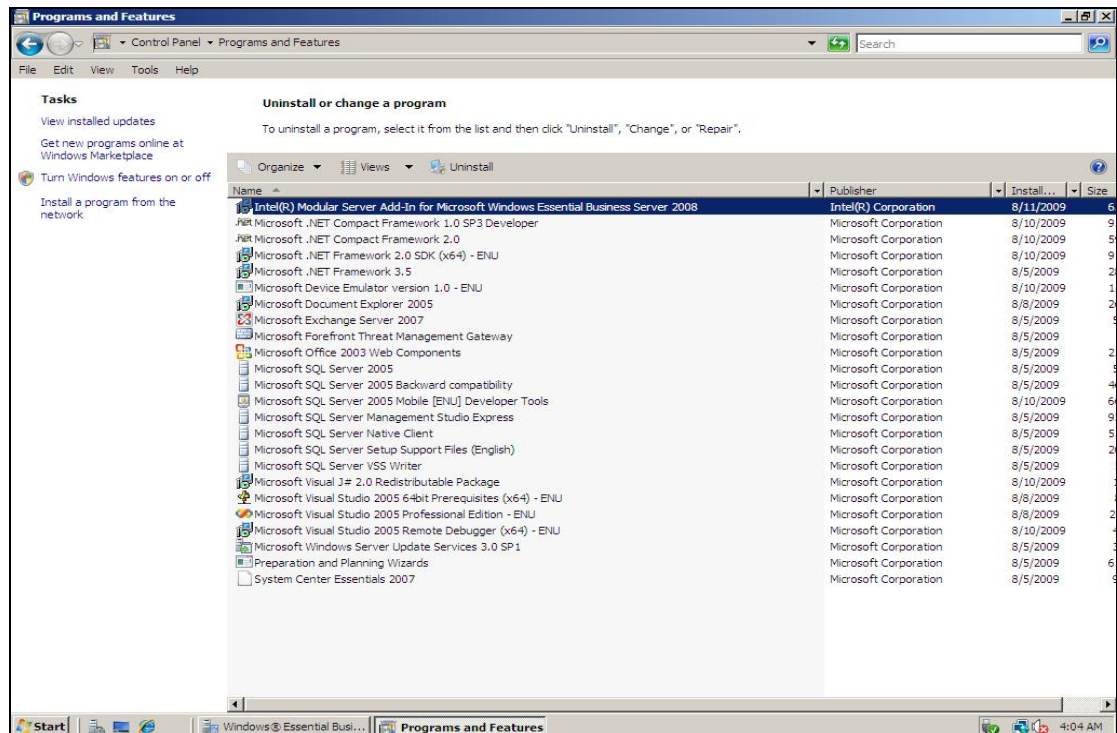
1. Before starting installation user needs to ensure he has administrative privilege.
2. Launch ModularServerConsole.msi and follow the instructions.
3. Accept the license agreement. If user selects "no", installation will be aborted.



4. Click **Next** buttons to continue.
5. Finally click **Finish** button to complete installation.



6. Verify the "Add or Remove Programs" menu as shown below. It must have new entry "Intel® Modular Server Add-In for Microsoft Windows* Essential Business Server 2008" added.

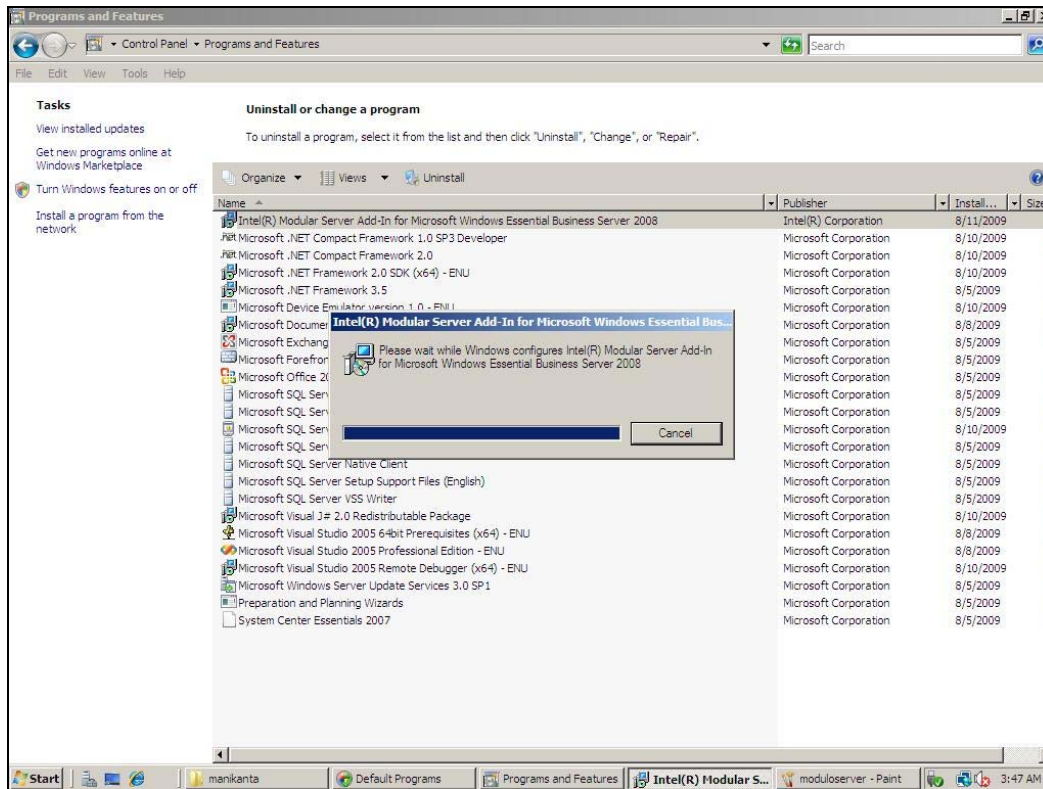




Uninstallation

Follow the steps below:

1. Open “Programs Add Features” menu from control panel and select “Intel® Modular Server Add-In for Microsoft Windows* Essential Business Server 2008” and click **Remove** button as shown below.

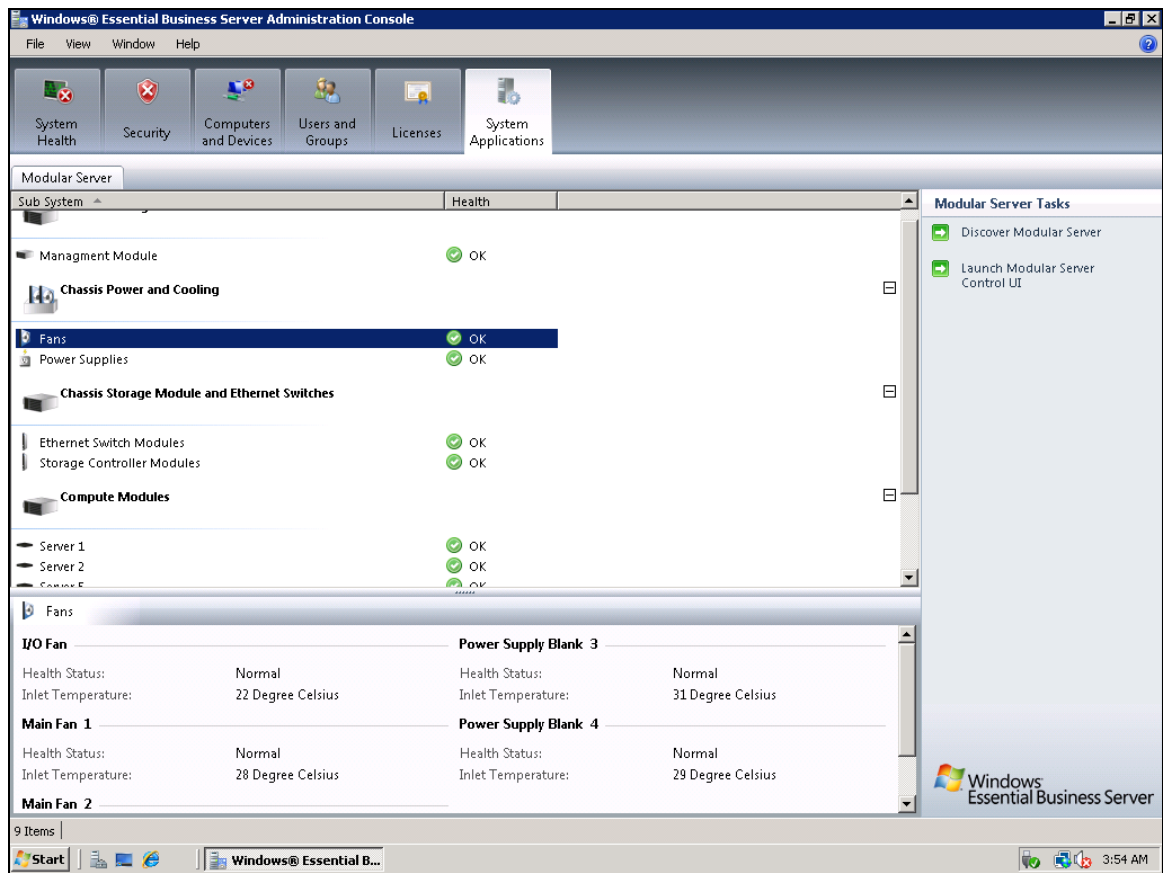


2. Verify that the entire installed files specific to Modular Server Console are removed.

6 Discovery Task

Once installation is completed successfully, the Discovery UI will pop up. User can follow below steps to discover Modular Server and its components.

1. Discovery UI will ask for IP address or hostname of Modular Server (CMM). If the given IP/hostname is of Modular server on current system, discovery task will run successfully.
2. If IP Address is not known, an IP Address range can be given in which User expects the CMM IP Address. Discovery task will scan the network in the range given for a CMM IP Address.
 - a. Only current Modular Server will be detected. If there are IP addresses of other Modular Servers in the given IP address range, they will be ignored.
3. If discovery is successful a Discovery success message will be given.
4. User can also launch Discovery Task from the Essential Business Server Administration Console.



7 Changes in this release

- Added support for AboutSMS utility.
- Added support for the SQL Server Discovery.