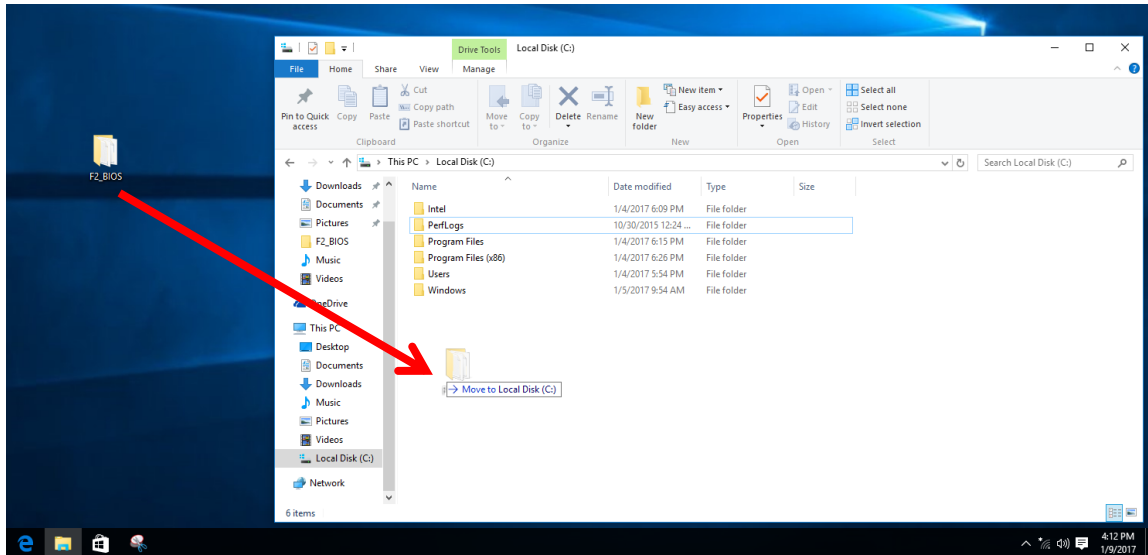


How to flash BIOS?

Kindly press DEL key to enter BIOS setting then follow the procedure below:

1. Into Windows. Unzip BIOS file and copy folder into C:\



2. Into F2_BIOS folder
3. Copy Image.bin file to Windows folder



4. Type CMD in task bar and right-click to run CMD in the administrator mode.





5. It will pop-up a Administration Command Prompt window,

(1) Type `cd\` and press enter to revert back to C:\

(2) Type `cd F2_BIOS` and enter will change the path to the BIOS folder.

(3) Type `cd Windows` and enter will change the path to the Windows folder.

(4) Type `flash` and press enter to flash BIOS and ME separately.

```
Administrator: Command Prompt
Microsoft Windows [Version 10.0.10586]
(c) 2016 Microsoft Corporation. All rights reserved.

C:\Windows\system32>cd\

C:\>cd F2_BIOS

C:\F2_BIOS>flash
```

6. BRIX will restart automatically, you can press DEL enter BIOS to check

BIOS version.

```
C:\F2_BIOS>afuwinx64.EXE image.bin /P /B /N
+-----+
|          AMI Firmware Update Utility  v5.08.00          |
| Copyright (C)2015 American Megatrends Inc. All Rights Reserved. |
+-----+
Reading flash ..... done
- ME Data Size checking . ok
- FFS checksums ..... ok
Erasing Boot Block ..... done
Updating Boot Block ..... done
Verifying Boot Block ..... done
Erasing Main Block ..... done
Updating Main Block ..... done
Verifying Main Block ..... done
Erasing NVRAM Block ..... done
Updating NVRAM Block ..... done
Verifying NVRAM Block ..... done
```

BIOS Information

Project Name	GB-BKi3(H)A-7100
BIOS Version	F2
Build Date and Time	12/21/2016 16:49:52
LAN MAC Address	1C-1B-0D-2C-12-99
Total Memory	4096 MB
ME FW Version	11.5.0.1058
System Date	[Thu 12/29/2016]
System Time	[15:58:36]