

StorageLibrary T24 LTO


**QUICK
START**



WHAT'S IN THE BOX?



1



2



3



4



5





6

1. Power cords
2. LVD SCSI 68-pin HD to HD cable and LVD terminator*
3. Ethernet cable
4. Shipping locks
5. Rack-mount kit (fasteners and instructions included)
6. Bar code labels**

* LVD SCSI configuration only.
Important: LTO-2, LTO-3, and LTO-4 Ultra 160 SCSI tape drives are Ultra 160 SCSI devices and require a minimum Ultra 160 non-RAID SCSI host bus adapter card, Ultra 160 rated SCSI cabling, and an Ultra 3 active Ultra 160 SCSI terminator.
 LTO-4 Ultra 320 SCSI tape drives are Ultra 320 SCSI devices and require a minimum Ultra 320 non-RAID SCSI host bus adapter card, Ultra 320 rated SCSI cabling, and an Ultra 3 Active Ultra 320 SCSI terminator.

Additional Items

Host computer with adapter card installed	You need a host computer with a host bus adapter card installed. Refer to the documentation that came with the computer and LVD SCSI or LC Fibre Channel (FC) adapter card. The library is configured for LVD SCSI, LC Fibre Channel or SAS. Important: LTO-2, LTO-3, and LTO-4 SCSI tape drives are Ultra 160 SCSI devices and require a minimum Ultra 160 non-RAID SCSI host bus adapter card (LVD SCSI configuration only).	
Hybrid cable	If your SCSI controller has a 68-pin VHDCI connector, you will need to obtain a VHDCI-to-HD SCSI cable.	 HD Connector  VHDCI Connector
SAS Cable	If you have a SAS adapter card installed, you need to obtain a SAS cable.	
Tools	You will need a #1 Phillips screwdriver.	
Fibre Channel cable	If you have a Fibre Channel adapter card installed, you need to obtain a FC cable. If the tape drive (s) installed in the library have LC Fibre Channel connectors, they accommodate connection to a 50-micron or 62.5-micron multi-mode optical fibre cable with LC connectors.	
Power cord (for use outside the US, Canada, or Europe)	If you plan to use the library outside these locations, you must supply your own power cord (see the Product Manual at www.tandbergdata.com for information about an International 220 VAC power cord).	
Backup software	You need a backup software application to manage your backup operations. Refer to the documentation that came with the backup software and make sure it supports the library. See www.tandbergdata.com for compatibility information.	

Data and Cleaning cartridges (available from Tandberg Data or your supplier)

Tape Drive	Ultrium 5 (sky blue)		Ultrium 4 (green)		Ultrium 3 (slate blue)		Ultrium 2 (purple)		Ultrium 1 (black)		LTO Ultrium Cleaning Cartridge
	Read	Write	Read	Write	Read	Write	Read	Write	Read	Write	
LTO-5	Yes	Yes	Yes	Yes	Yes	No	No	No	No	No	Yes
LTO-4	No	No	Yes	Yes	Yes	Yes	Yes	No	No	No	Yes
LTO-3	No	No	No	No	Yes	Yes	Yes	Yes	Yes	No	Yes
LTO-2	No	No	No	No	No	No	Yes	Yes	Yes	Yes	Yes

TECHNICAL SUPPORT

Visit the Support section of the Tandberg Data web site (<http://www.tandbergdata.com>) for the following:

- Driver, firmware, and software updates
- Knowledge base articles
- Troubleshooting information
- Product documentation
- Product warranty and registration
- Email and phone technical support

Make a note of your Product Model number and Product Serial number here

Model No.

Serial No.

Don't forget to register your product now at www.tandbergdata.com/register

1 Unpack the Library

WARNING! The library weighs 46.1 lbs (20.9 kg). Two people are needed to move or lift the library. Most of the weight is toward the back of the library.

WARNUNG! Die Library wiegt 20.9 kg. Es sind mindestens 2 Personen erforderlich, um die Library zu bewegen oder zu heben. Der hintere Teil der Library hat das Größte Gewicht.

¡PRECAUCIÓN! La biblioteca montada sobre bastidor pesa 20.9 kg. Se necesitan dos personas para mover o levantar la biblioteca. La parte trasera de la biblioteca es la de mayor peso.



Before you begin

- 1 — Ensure that you have all the required items before you proceed (see Accessories and Additional Items on page 1).
- 2 — Locate an appropriate area for the unit that has adequate clearance for ventilation, minimal dust and debris, and an appropriate power source.
The unit is designed for installation in a standard 4 post, 19-inch rack.
- 3 — Ensure that the work area is free from conditions that could cause electrostatic discharge (ESD). Discharge static electricity from your body by touching a known grounded surface, such as a computer's metal chassis.
- 4 — The unit must be operated in the horizontal position. Do not place it on its side, and do not place objects on top of it.

Unpack the library

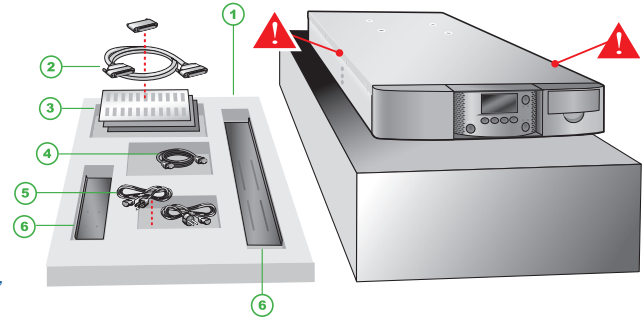
- 1 — Remove foam ① and accessories:
 - ② LVD SCSI cable and terminator*
 - ③ Barcode labels and warranty
 - ④ Ethernet cable
 - ⑤ Power cords
 - ⑥ Rack mount kit

- 2 — Lift unit only by the 2 sides

*LVD SCSI configuration only.

Important: Save all original packing materials in case you need to ship or move the library later.

Rack-mount the Library (optional) If you plan to install the library in a rack, see the Rack-mount Instructions (complete prior to Step 3).



2 Install a Tape Drive (if Necessary)

If your library does not have a drive installed, you must first install a drive before proceeding to step 3. (If you have a drive installed proceed to step 3.) Install the drive using the Field Instructions that are packaged with the drive.

Important: The Field Instruction may include directions for reconfiguring the library. DO NOT CONFIGURE / RECONFIGURE THE LIBRARY PER THE DRIVE FIELD INSTRUCTIONS. The library will be able to self-configure during Power On at step 4.

3 Connect the Cables

WARNING! Before performing any installation or maintenance procedures, be sure that the library power switch is in the off position and that the power cord is disconnected from the library and the outlet.

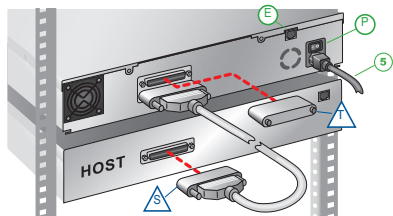
WARNUNG! Vor der Ausführung von Installations- oder Wartungsarbeiten ist darauf zu achten, daß der Library-Netzschalter auf "Aus" gestellt ist und daß das Anschlußkabel vom Library und der Steckdose entfernt ist.

¡PRECAUCIÓN! Antes de realizar cualquier procedimiento de instalación o de mantenimiento, comprobar que el interruptor de alimentación de la biblioteca está apagado y que el cable de alimentación no está enchufado ni a la biblioteca ni a la toma de corriente.



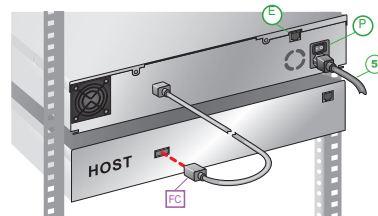
SCSI connections (LVD only):

- 1 — Connect SCSI cable and Terminator*
- 2 — Connect Power cord



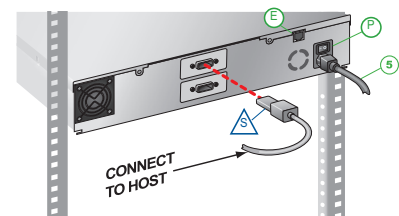
Fibre Channel connections:

- 1 — Connect Fibre Channel cable
- 2 — Connect Power cord



SCSI connections (SAS only):

- 1 — Connect SAS cable
- 2 — Connect Power cord



Power switch (Off=0 On=1)

Ethernet port (see Product Manual for addressing; the default setting is DHCP enabled)

Important: LTO-2, LTO-3, and LTO-4 Ultra 160 SCSI tape drives are Ultra 160 SCSI devices and require a minimum Ultra 160 non-RAID SCSI host bus adapter card, Ultra 160 rated SCSI cabling, and an Ultra 3 active Ultra 160 SCSI terminator. LTO-4 Ultra 320 SCSI tape drives are Ultra 320 SCSI devices and require a minimum Ultra 320 non-RAID SCSI host bus adapter card, Ultra 320 rated SCSI cabling, and an Ultra 3 Active Ultra 320 SCSI terminator. An inadequate terminator will result

4

Power On/Remove Ship Locks

1 — Power on the library by pressing the power switch on the back of the library (press the I).

When you apply power with the shipping locks installed, the library displays a message and ejects the magazines.

2 — Pull both magazines straight out of the library.

3 — Power the library off.

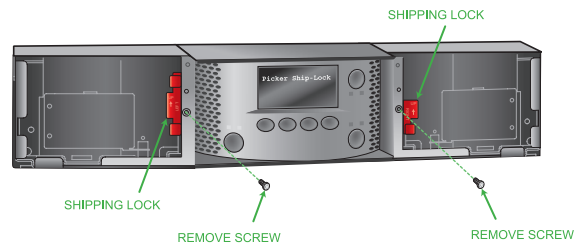
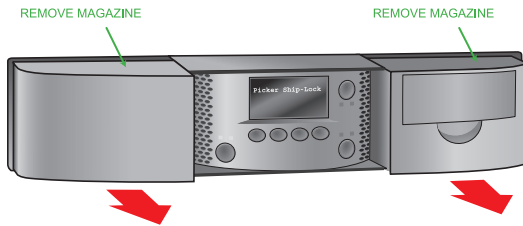
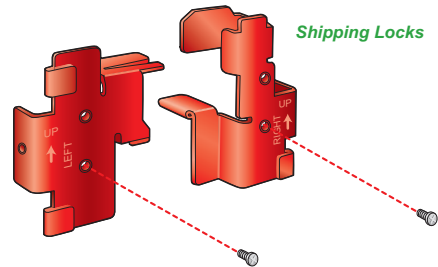
4 — Remove the screws securing the shipping locks, and remove the locks.

5 — Carefully slide the magazines straight back into the library.

6 — Power the library on (press the I).

7 — Power the host computer on.

Reinsert the screws in the shipping locks and store them with these instructions in case you need to move or ship the library later.



5

Add Bar Code Labels/Load Cartridges

1 — Apply bar code labels to cartridges.

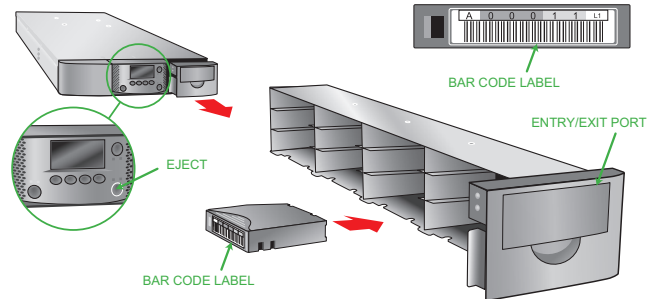
2 — Press the eject button to unlock the magazine (magazine releases and moves a short distance out of the library). This may take a few minutes.

3 — Pull the magazine straight out of the library (no side-to-side or up/down motion).

4 — Load cartridges in slots as shown.

5 — Slide the loaded magazine straight back into the library. The library performs an inventory after the magazine is installed.

Note: Refer to the Product Manual for important information about the cleaning slot location and the I/E port.



6

Verify the Hardware Installation

1 — Download and install LibTool and LTOTool onto your Host (select the version for your operating system). The readme files that accompany LibTool and LTOTool provide instructions. Download tools from www.tandbergdata.com.

2 — Use LibTool to:

- Detect the library
- View the library's cartridge inventory
- Move tapes into and out of the tape drive

3 — Use LTOTool to:

- Detect the tape drive
- Perform a Read/Write test



Note: LibTool may return an error message with some tape drives, but still returns the requested information.

Congratulations! Your library is now ready for use. Please refer to the Product Manual for detailed instructions on how to get the best from your new purchase.

Prepare for and Perform a Backup

Congratulations! You have successfully installed your new library! We recommend that you follow these steps:

- 1 — Read Tandberg Data's Basic Backup Guide, which is available at: www.tandbergdata.com.
- 2 — Select and install a backup application. Software compatibility information is available at: www.tandbergdata.com.
- 3 — Perform a backup. For questions regarding software installation, configuration, or operation (including how to perform a backup) — contact your software provider.

Notes: 1) Driver installation may not be necessary and depends on the backup application that you use in your system. Refer to the installation instructions for your backup application for verification. 2) You can configure the library for a customized operation to fit your particular needs. See the Product Manual at www.tandbergdata.com.

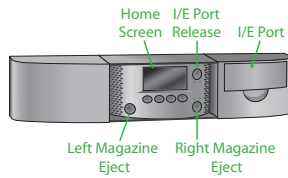
Troubleshooting Tips

Our online Troubleshooting checklist contains a more comprehensive list of symptoms and solutions. [See over for web address.](#)

Library did not power on	<ul style="list-style-type: none"> • Is the power cord inserted correctly and is the power switch on (press the I on the back of the unit)? • Did you remove the shipping key?
Front panel error	Refer to the Product Manual for a list of error messages and corrective actions.
LIBTool or LTOTool not communicating with the library	Refer to the SCSI Bus Configuration Tips in Knowledge Base article # 1163 at www.tandbergdata.com .
Backup software not communicating with the library	<ul style="list-style-type: none"> • Bus configuration and cables—Refer to the installation instructions (and tips above). • Software compatibility—Make sure that your library and tape drive are compatible with the backup software you plan to use. Check www.tandbergdata.com. • Control mode—Use Random mode (the default) with an application that controls the library. Use sequential mode or if your backup application will not control the library.** • Tape Drive Configuration—Make sure that the Drive Configuration (Drive/Drive Configuration) matches the tape drive installed.** • Driver installation—Some applications provide their own drivers, some do not, and some require installation of the Tandberg Data provided drivers. Refer to the documentation for your backup application and Knowledge Base article # 2003 at www.tandbergdata.com for more information.
Front Panel Clean Tape Drive message	<p>Use one of the following options to clean the tape drive:</p> <ul style="list-style-type: none"> • Instruct your backup software to issue a Clean the Tape Drive command. Refer to the software documentation and the library Product Manual for instructions. • Use the library's Autoclean option.** • Manually install a cleaning cartridge when the tape drive requires cleaning.**

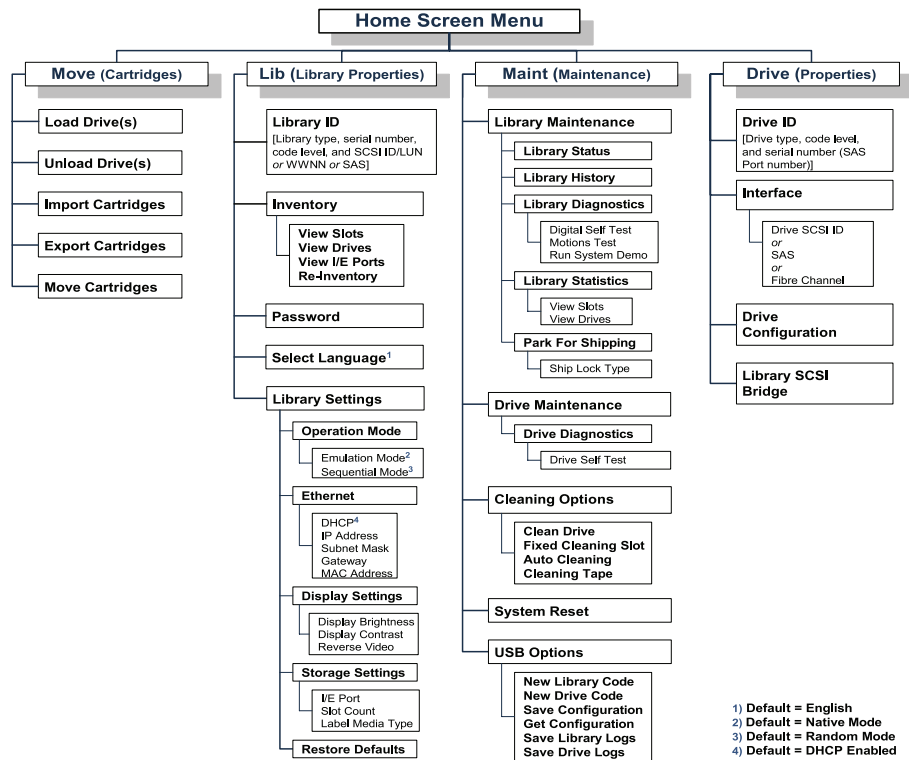
* All references to SCSI are for the SCSI library only. ** Refer to the Library's Product Manual for instructions or additional information.

Home Screen Menu and Buttons



Home Screen Buttons	Function
OK	Accept the change
Select	Accept the choice
Back	Return to previous screen

Exterior Buttons	Function
I/E Port	Unlock I/E Port
Magazine	Unlock magazine



- 1) Default = English
- 2) Default = Native Mode
- 3) Default = Random Mode
- 4) Default = DHCP Enabled

NOTES

Additional Information

Contact Tandberg Data for general information, sales, service, and support at: www.tandbergdata.com. Always check the website for the most up to date information.



IMPORTANT! Before moving or shipping the library, you must first “Park the Robot” and replace the shipping locks.

- From the library’s front panel, press the Maintenance/Library Maintenance/ Shipping/Park the Robot buttons.
- After you receive the confirmation message (Park for Shipping Good), insert the shipping locks by following the instructions in Step 4 in reverse order. See the Product Manual for important information about the shipping lock type.

Register Your Library

Be sure to register your library for support and product updates. You can register online at: www.tandbergdata.com.

Copyright 2010 Tandberg Data Corporation: Tandberg Data, Exabyte, the Exabyte Logo, EZ17, M2, SmartClean, VXA, and VXAtape are registered trademarks; ExaBotics and MammothTape are trademarks; SupportSuite is a service mark. Linear Tape-Open, LTO, the LTO Logo, Ultrium and the Ultrium Logo are trademarks of HP, IBM, and Quantum in the US and other countries. All other product names are trademarks or registered trademarks of their respective owners.

P/N 1018464 C

May 2010

